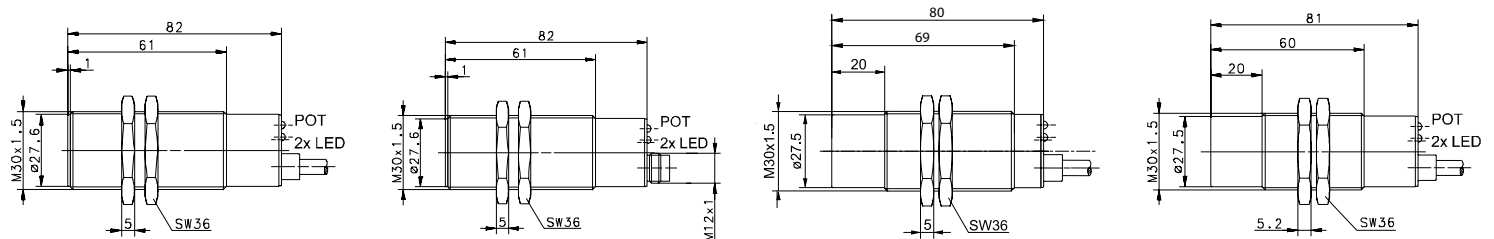




CAPACITIVE SENSORS Type M30

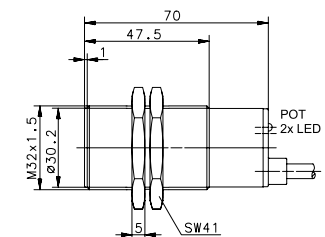
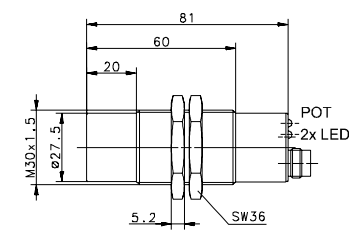
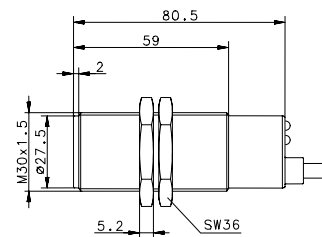
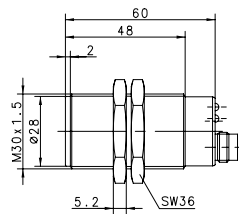
Type	M30	M30	M30	M30
Enclosure material	CuZn39Pb3	CuZn39Pb3	Stainless steel 1.4305	PBT, black
Type of installation	flush	flush	non-flush	non-flush
Nominal sensing distance	10 mm	10 mm	20 mm	20 mm
Type of connection	Cable 2 m	Connector M12	Cable 2 m	Cable 2 m
Special feature	PTFE Front cap	PTFE Front cap	PTFE Front cap / Stainless steel enclosure	
PNP	DC	NO contact	6507907001 KCB-M30PS/010-KLP2	6507907004 KCB-M30PS/010-KLPS12
PNP	DC	NC contact	6507707001 KCB-M30PÖ/010-KLP2	6507908001 KCN-M30PS/020-KLP2
NPN	DC	NO contact		6507308001 KCN-M30NS/020-KLP2
NPN	DC	NC contact		6507323001 KCN-T30NS/020-KLP2
				6507123001 KCN-T30NÖ/020-KLP2
Technical data				
Rated operating voltage range	U_B	10–60 VDC	10–60 VDC	10–60 VDC
Rated operating current	I_e	≤ 400 mA	≤ 400 mA	≤ 400 mA
Switching frequency (max)	F	25 Hz	25 Hz	25 Hz
Short circuit-protection		cyclic	cyclic	cyclic
Function/operating voltage indicator		LED/LED	LED/LED	LED/LED
Sensing distance, adjustable		Poti	Poti	Poti
Mechanical data				
Ambient temperature (min/max)		–25°C/+70°C	–25°C/+70°C	–25°C/+70°C
Protection class in accordance with IEC 529, EN 60529		IP65	IP65	IP65
Connection		3 x 0.5 mm ²	M12 x 1	3 x 0.5 mm ²



CAPACITIVE SENSORS Type M30, M32



Type	M30	M30	M30	M32
Enclosure material	PBT, black	PBT, black	PBT, black	CuZn39Pb3
Type of installation	non-flush	non-flush	non-flush	flush
Nominal sensing distance	20 mm	20 mm	20 mm	15 mm
Type of connection	Connector M12	Cable 2 m	Connector M12	Cable 2 m
Special feature	Short type	Pickup delay / Relays		PTFE Front cap
PNP DC NO contact	6507923006 KCN-T30PS/020-KLPS12V		6507923004 KCN-T30PS/020-KLPS12	
NPN DC NO contact				
PNP/NPN DC NO/NC prog.				6507013011 KCB-M32DP/015-KLP2
PNP/NPN DC Push-pull operation				6507013012 KCB-M32GP/015-KLP2
Relay Changeover contact		6509023001 KCN-T30RU/020-LP2		
Technical data				
Rated operating voltage range	U_B 10–60 VDC	20 V–250 V AC/DC	10–60 VDC	10–60 VDC
Rated operating current	I_e ≤ 400 mA	≤ 1 A	≤ 400 mA	≤ 400 mA
Switching frequency (max)	F 25 Hz	–	25 Hz	25 Hz
Short circuit-protection	cyclic	–	cyclic	cyclic
Function/operating voltage indicator	LED/LED	LED/LED	LED/LED	LED/LED
Sensing distance, adjustable	Poti	Poti	Poti	Poti
Mechanical data				
Ambient temperature (min/max)	–25°C/+70°C	–25°C/+70°C	–25°C/+70°C	–25°C/+70°C
Protection class in accordance with IEC 529, EN 60529	IP65	IP67	IP65	IP67
Connection	M12 x 1	5 x 0.5 mm ²	M12 x 1	3 x 0.5 mm ²





CAPACITIVE SENSORS Type M32

Type	M32	M32	M32
Enclosure material	CuZn39Pb3	PBT, black	PBT, black
Type of installation	flush	non-flush	non-flush
Nominal sensing distance	15 mm	30 mm	30 mm
Type of connection	Connector M12	Cable 2 m	Connector M12
Special feature	PTFE Front cap		
PNP	DC	NO contact	
NPN	DC	NO contact	
PNP/NPN	DC	NO/NC prog.	
		6507013015 KCB-M32DP/015-KLPS12	6507013001 KCN-T32DP/030-KLP2
			6507013004 KCN-T32DP/030-KLPS12
PNP/NPN	DC	Push-pull operation	
			6507013002 KCN-T32GP/030-KLP2
Technical data			
Rated operating voltage range	U_B	10–60 VDC	10–60 VDC
Rated operating current	I_e	≤ 400 mA	≤ 400 mA
Switching frequency (max)	F	25 Hz	25 Hz
Short circuit-protection		cyclic	cyclic
Function/operating voltage indicator		LED/–	LED/–
Sensing distance, adjustable		Poti	Poti
Mechanical data			
Ambient temperature (min/max)		–25°C/+70°C	–25°C/+70°C
Protection class in accordance with IEC 529, EN 60529		IP65	IP65
Connection		M12 x 1	3 x 0.5 mm ²

